

PAS 150HF 300 FZD71

Diesel - Qmax 142 l/s - Hmax 51 m



Indicative picture of the product

PAS HF - Vacuum prime centrifugal pumps

The pump system consists of a centrifugal pump and a vacuum pump - making automatic priming possible. The machine quickly removes the air from the suction pipe and begins to pump, even at suction heights of several metres. The PAS MF series is also appropriate for pumping liquids with suspended solids because of the semi-open impeller.

Applications

Both Atlas Copco and Varisco have decades of experience in designing and producing pumps. We have put those years of expertise into providing a solutions portfolio that works across multiple applications. The PAS HF (high flow) range is packed with features that not only meet, but exceed the needs of the market. We are focused on an efficient, extremely versatile pump that is suitable for many industries, including construction, general dewatering and emergency applications, such as flood clean up.

Benefits

Pump

High efficiency: 70% (B.E.P)

Rapid "dry" priming

Up to a height of 7,5 m (24.6 ft)

High resistance

To abrasive liquids and turbid sandy waters

Semi-open impeller

Solids handling up to 76 mm (3")

Diaphragm vacuum pump

Oil free suitable for dry running: no contamination of the environment

Mechanical shaft seal in oil bath

It allows the "dry running" operation of the pump

Easy maintenance

Hinged cover for direct access to the impeller (without lifting devices). Link belt quick to replace on the field.

Wear plates

Cast iron or stainless steel (F10) wear plate, that is easily replaceable

1 800 PUMP RENTAL

nationalpump.com.au | sales@nationalpump.com.au



NPE
NATIONAL PUMP & ENERGY

PAS 150HF 300 FZD 71

Performance curves

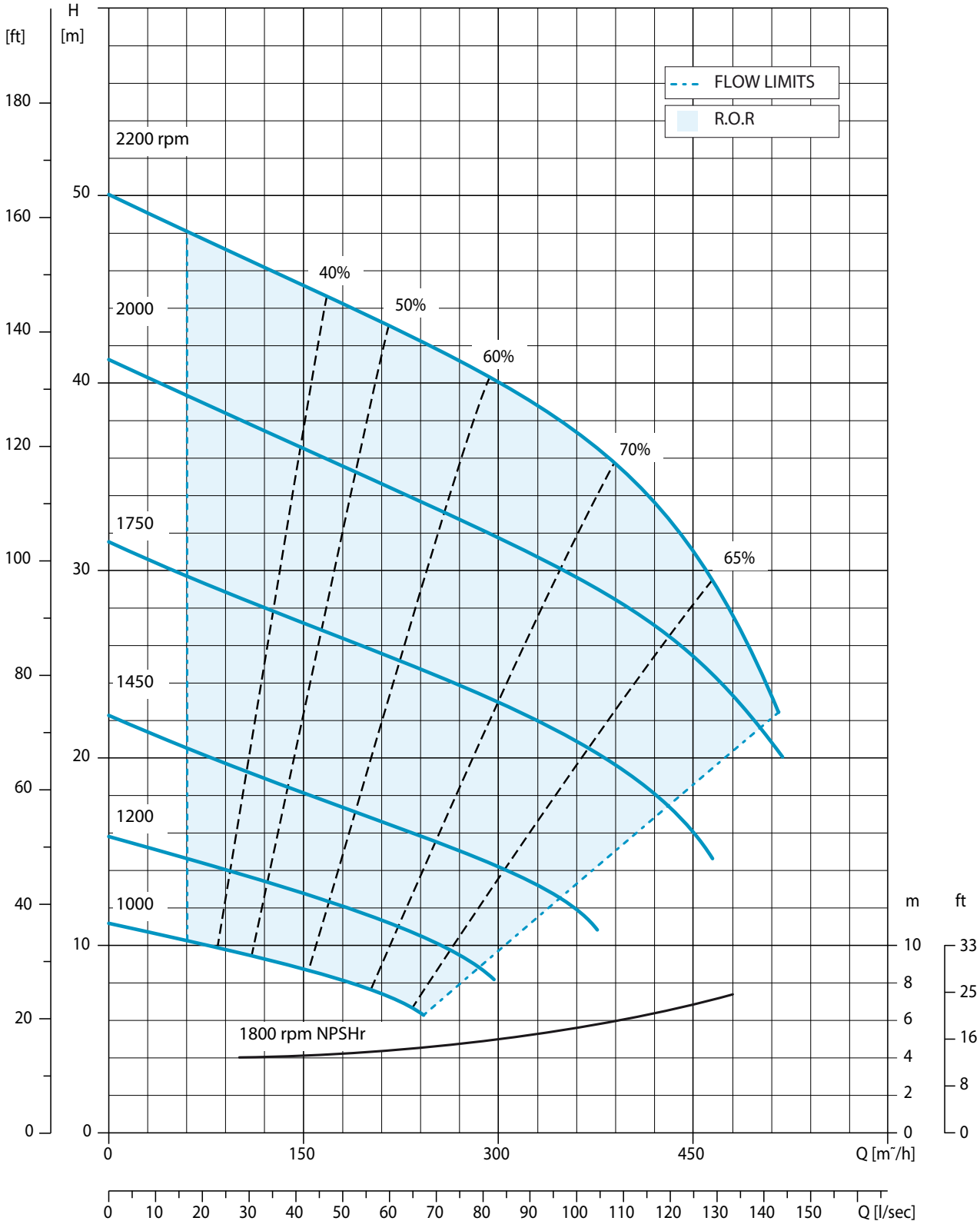
Test according to UNI EN ISO 9906 standard - level 2

Test liquid: clean water, density 1,000 kg/m³

Losses from priming system and check valve not included

Spherical solids handling: D.76 mm (3")

Max absorbed power: 51,0 kW - 68.4 HP (2.200 rpm)



1800 PUMP RENTAL

nationalpump.com.au | sales@nationalpump.com.au



NPE
NATIONAL PUMP & ENERGY

PAS 150HF 300 FZD 71

Technical data

Pump

| Model | PAS 150HF | |
|------------------|---|-------------------------------------|
| Qmax | 142 l/s - 510 m ³ /h - 8.500 l/min (2,250 USgpm) | |
| Hmax | 51 m (167 ft) | |
| Q max eff. | 108 l/s - 390 m ³ /h - 6.500 l/min (1,720 USgpm) | |
| Eff. max | 70 % | |
| Suction port | Flanged - 150 TABLE E (AS 2129) | |
| Delivery port | Flanged - 150 TABLE E (AS 2129) | |
| Impeller type | Semi-Open, 2 vane | |
| Solids handling | 76 mm (3.0 ") | |
| Material | G10 | F10 |
| Casing | EN-GJL-200 cast iron | EN-GJL-200 cast iron |
| Impeller | EN-GJS-500 cast iron | CF8M stainless steel |
| Wear plates | EN-GJL-200 rubber lined cast iron | CF8M stainless steel |
| Number of plates | 2 | 2 |
| Shaft | 39NiCrMo4 steel | 39NiCrMo4 steel |
| Mechanical seal | Tungsten carbide / Tungsten carbide | Tungsten carbide / Tungsten carbide |
| Elastomers | VITON | VITON |

Priming system

| Vacuum pump | V20 |
|----------------------|---------------------------------|
| Vacuum pump type | Diaphragm |
| Nominal air capacity | 50 m ³ /h (29.4 cfm) |
| Max vacuum | 0,9 bar |
| Separator type | Valmatic |
| Separator material | EN-GJL-200 cast iron |
| Drives | Link belt |

Engine

| Make | Deutz | | | |
|-------------------|--|------|------|------|
| Model | TD 2.9 L4 (ZD71) | | | |
| Type | Diesel direct injection, aspirated | | | |
| Displacement | 2.900 cm ³ (177 in ³) | | | |
| No. cylinders | 4 | | | |
| Cooling | Liquid with radiator | | | |
| Rpm type | Variable | | | |
| Standard speed | 2.200 rpm | | | |
| US emissions | EPA Tier 3 | | | |
| Starting | Electric | | | |
| Starting voltage | 12 V | | | |
| Speed [rpm] | 1600 | 1800 | 2000 | 2200 |
| Consumption [l/h] | 10,1 | 11,2 | 12,3 | 12,8 |
| Power [kW] | 40,5 | 45,2 | 49,3 | 51,2 |
| Power [HP] | 54.3 | 60.6 | 66.1 | 68.7 |

Control panel

| Model | PWK37 KENSHO CONTROLLER |
|-------|---|
| | Manual operation: start, stop |
| | Automatic operation: start-stop with transducers or floats |
| | Digital display |
| | Hour meter, Rev counter, Liquid temperature, Oil pressure |
| | Battery voltmeter, Fuel level (%), |
| | Automatic engine shutdown in case of: |
| | - low oil pressure |
| | - water overheating |
| | - low battery voltage |
| | (engine failure alarms with LED lights and display message) |
| | Emergency stop button |
| | Push-button accelerator (up/down) |

1 800 PUMP RENTAL

nationalpump.com.au | sales@nationalpump.com.au



NPE
NATIONAL PUMP & ENERGY

PAS 150HF 300 FZD71

Arrangements

| Technical data | |
|----------------|--|
| Material | S235JR EN 10025-2 carbon steel |
| Coatings | Polyester powder, average thickness of 80 µm |
| Color | Yellow and grey Atlas Copco (standard) |
| Battery | Acid charge Pb-Ca maintenance free 12 V - 100 Ah - 400 A |
| Tank | 320 l (84.5 USG) |

PAS 150HF 300 CNP



| | |
|-------------------|-----------------------|
| Dimensions | 1220 x 2600 x 1800 mm |
| Dry weight (KL38) | 1680 kg |
| Noise level | 63-68 dB(A) @10 m |

PAS 150HF 300 SKID



| | |
|-------------------|----------------------|
| Dimensions | 1070 x 2730x 1960 mm |
| Dry weight (KL38) | 1510 kg |
| Noise level | 75-80 dB(A) @10 m |

Specification is subject to change without prior notice. Please check with your local Atlas Copco representative for the latest specifications.

1800 PUMP RENTAL

nationalpump.com.au | sales@nationalpump.com.au



NPE
NATIONAL PUMP & ENERGY