

Diesel Driven Bentonite and Sludge Pump BV100 D240



BV auto prime pump

The BV range of pumps has been designed with a clear focus on reliability and durability. Featuring a 100% mechanical priming system, the BV series pumps quickly prime and re-prime, even from dry conditions. The heavy build style of both pump and frame make the BV range perfect for use in the strenuous drilling market.

World-class performance

The BV range is built to be deployed on the most demanding drilling and bentonite applications. Using high efficiency pumps and state-of-the-art diesel engines, the pumps offer maximum performance at minimal cost, fully in-sync with the company philosophy of "Lowest cost of ownership".

KEY FEATURES

- Steel welded materials offers high wear resistance
- Basic mechanical pump concept
- MP100 oil-spill free priming system
- Easy clean floating box on the suction spool
- Large inspection covers for easy access
- Robust design

PUMP SPECIFICATIONS

Type	BV100 D240
Max. Flow	150 m ³ /hour (660 US)
Max. pressure	17 mwc (56 ft.)
Connections	DN 100 (4")
Solids handling	86 mm (3.38")
Impeller type	Open impeller
Priming system	BBA MP100
Engine	Hatz 2M41
Canopy	E12-25
Weight (net)	2100 kg (4620 lb)
Sound level	Approx. 60 dB (A) at 10m

Complete package designed & built by BBA Pumps

- Complete in-house design & production
- Over 60 years of experience in the market
- Complete testing facility in-house
- Contemporary & functional design
- Durable & eco-friendly materials
- Custom builds available

After sales service & product support

- Single supplier for parts, spares & accessories
- Dedicated customer help-desk (24h service)
- Dedicated service department in-house
- Global parts distribution network
- Optional global on-site servicing available
- Extensive training options available (technical & commercial), on-site or in-house

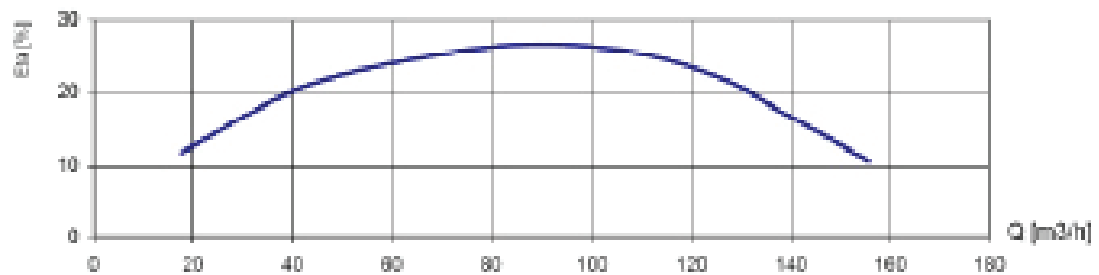
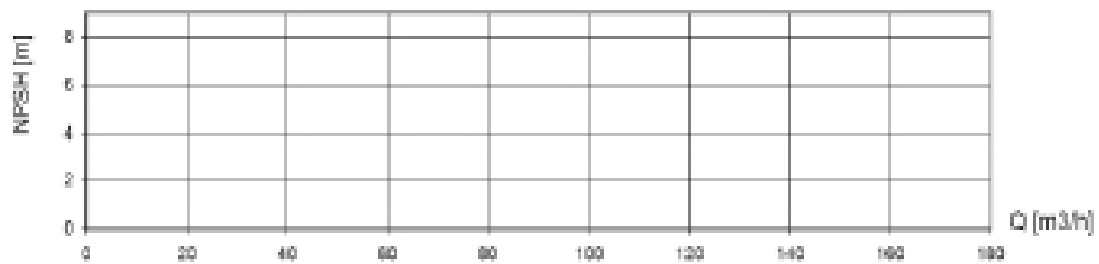
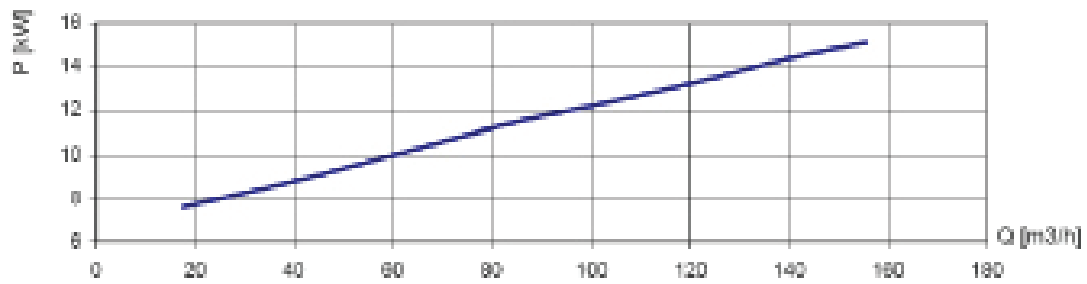
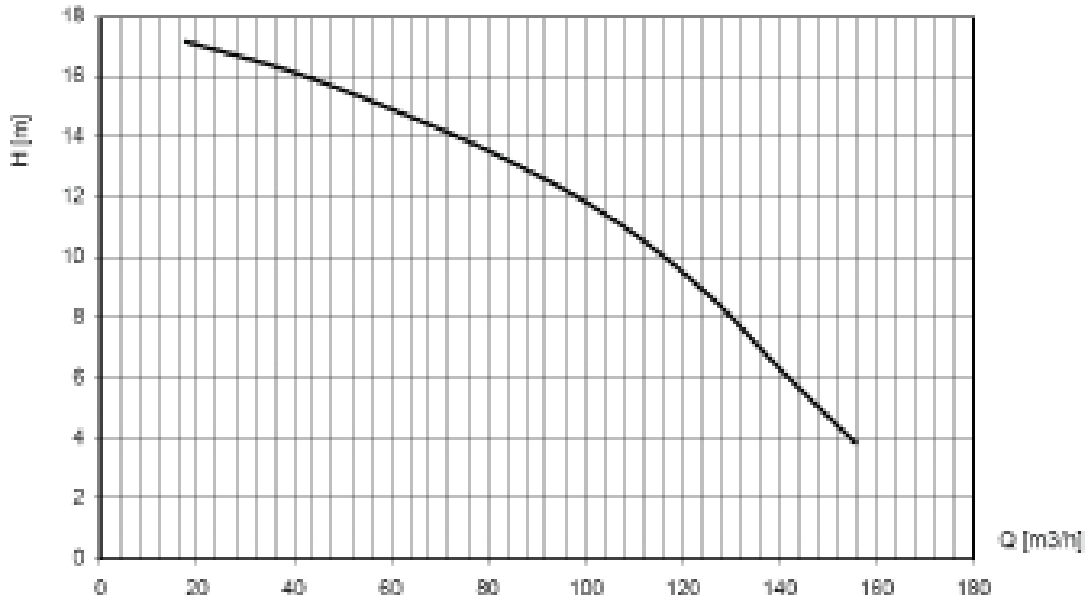




Diesel Driven Bentonite and Sludge Pump BV100 D240

PERFORMANCE CURVES (1500 RPM)

Density: 998.3 kg/m³



Diesel Driven Bentonite and Sludge Pump BV100 D240

STANDARD TECHNICAL SPECIFICATIONS

BBA auto prime pump
 Pump type BV100 D240
 Max. flow 150 m³/hour (660 US GPM)
 Max. head 17 mwc (56 feet)
 Impeller type Open impeller
 Solids handling 86 mm (3.38 inch)
 Pump casing Steel DIN 1.0036
 Impeller Steel DIN 1.0036
 Wear plate Steel DIN 1.0036
 Pump shaft..... Steel DIN 1.1191
 Shaft seal Mechanical seal 60 mm (2.36 inch)
 Seal faces Tungsten/Tungsten
 O-ring Viton

BBA priming system

Pump type BBA MP100 Diaphragm pump
 Air handling capacity 100 m³/h (59 CFM)
 Max. vacuum 8.5 m (29 inHg)
 Drive Toothed belt (continuous drive)
 Float box "Easy clean" hot dip galvanised
 Non return valve Steel DIN 1.0036
 Check valve disc Buna-N

Engine

Engine brand Hatz
 Engine type 2M41
 Flywheel power 15 kW (20 Hp)
 Max. engine speed 1500 RPM
 Fuel consumption 223 g/kWh
 Displacement 1.716 l
 Number of cylinders 2
 Cooling system Air cooled
 Starting method Electric start
 Exhaust emission EU Stage IIIA
 Exhaust emission US Tier 4i (EPA on demand)

BBA control panel LC04

- Auto start/stop system
- Two float switches included (10 m cable)
- Switch Manual-0-Auto
- Hour counter
- Warning light "oil temperature"
- Warning light "alternator"

Fuel system

- PE fuel tank 140 L. net (37 US Gallon)
- Fuel tank cap Ø 60 mm
- Mechanical fuel injection system
- Fitted with water separator & extra in-line fuel filter



- Electrical system & safety features
- Nominal voltage 12 Volt
 - Premium quality battery 92 amp.
 - Low oil pressure shut down



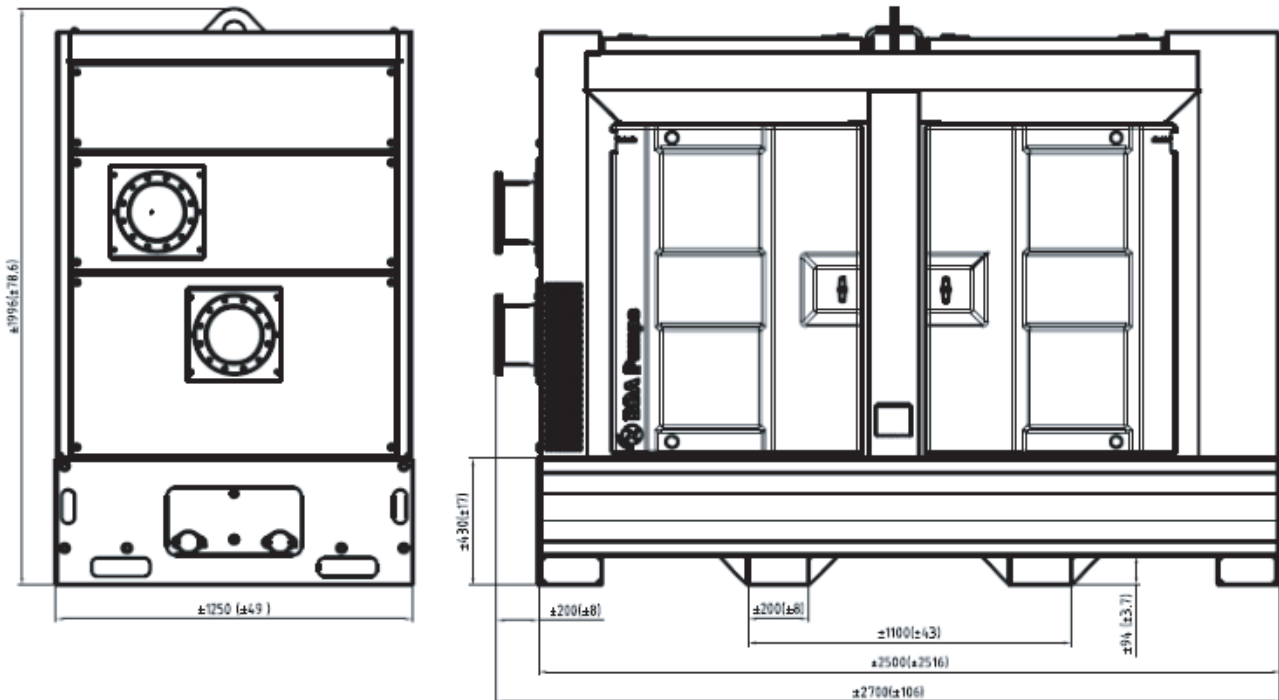
Diesel Driven Bentonite and Sludge Pump BV100 D240

CANOPY E12-25

- BBA super silent canopy
- Canopy type..... E12-25
- Dimensions L x W x H 2500 x 1250 x 1900 mm
- Dimensions L x W x H 98.5 x 49.2 x 75 inch
- Basic frame Hot dip galvanised
- Panels Powder coated
- Doors 4 easy-access doors (lockable)
- Fuel tank PE net 300 ltr (80 US Gallon)
- Fuel tank autonomy 80 hours
- Fuel tank cap 60 mm (2.5 inch)
- Forklift pockets..... Fitted with 2 forklift pockets
- Lifting point Fitted with single lifting point
- Oil drain pump Drain pump for engine oil installed (hand pump)
- Connections Please consult "auxiliary items"
- Exhaust system Fully integrated in canopy
- Documentation box BBA user manual
- Additional Fitted with oil-water separator

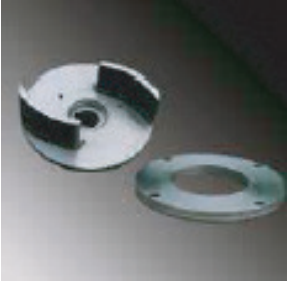
BBA E-slide® system

The E12-25 canopy has been fitted with the BBA E-slide® system, meaning that the pump and the diesel engine are mounted on a sub-frame which can be removed quickly from the canopy. This facilitates cleaning of the canopy and also allows for quick and easy inspections and preventative maintenance work on the engine and pump should this be required.



Actual dimensions (in mm & inches) may vary depending on selected quick couplings.

Diesel Driven Bentonite and Sludge Pump BV100 D240



Open impeller
Steel welded high abrasion resistant impeller and wear plate.



Double vacuum pump
Diaphragm pump, air-cooled, water-resistant and oil-spillage free. Air capacity of 100 m3 per hour.



Easy inspection
Oil glasses, drain valves and fill plugs are all easily accessible.



Easy clean floating box
Fully galvanised floating box with stainless steel floater and easy accessible.



Large inspection covers
Easy access to suction spool, impeller and nonreturn valve.



Interchangeable parts
Modular construction to ensure minimal spare part stock levels.

