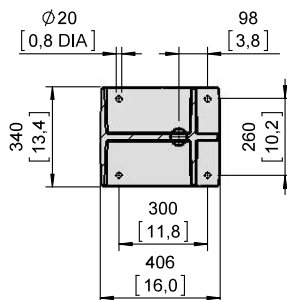
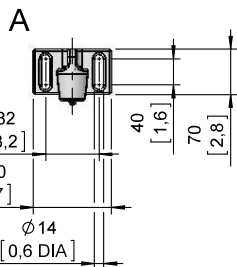
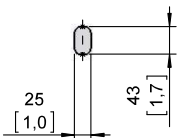


## SULZER XFP155J SUBMERSIBLE DEWATERING PUMP

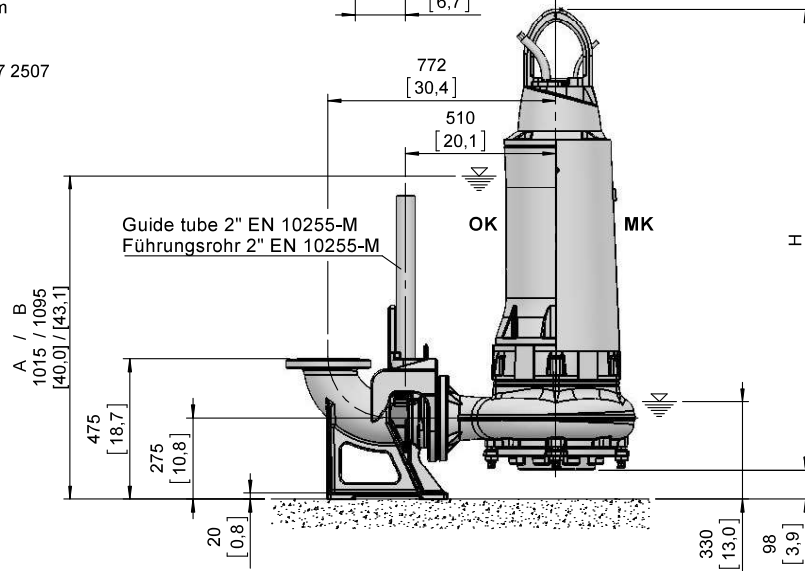
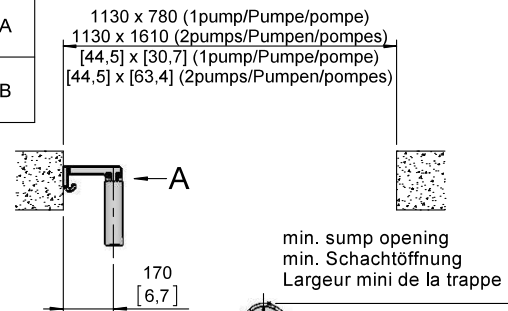
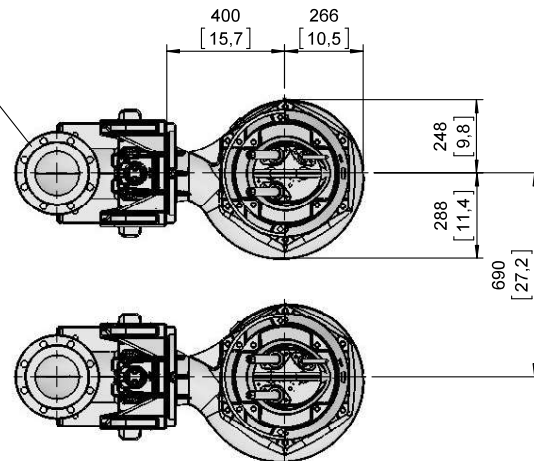
Type Typ Type	Type Typ Type	Weight Gewicht Poids		Weight Gewicht Poids		H		Size
		OK		MK		(mm)	(inch)	
50Hz	60Hz	(~kg)	(~lb)	(~kg)	(~lb)			
PE 220/4-J	PE 250/4-J-60	610	1345	650	1433	1480	58.3	A
PE 300/4-J	PE 350/4-J-60	645	1422	685	1510	1560	61.4	B
PE 370/4-J	PE 430/4-J-60	680	1499	725	1599	1480	58.3	A
PE 450/4-J	PE 520/4-J-60	710	1566	755	1665	1560	61.4	B
PE 185/6-J	PE 210/6-J-60	615	1356	655	1444			
PE 220/6-J	PE 250/6-J-60	655	1444	695	1532			
PE 300/6-J	PE 350/6-J-60	705	1555	750	1654			
PE 370/6-J	PE 430/6-J-60	715	1577	760	1676			

Weight: Includes pump, slider bracket and 10m cable  
 Gewicht: Beinhaltet Pumpe, Halterung und 10m Kabel  
 Poids: Pompe, coulisseau et 10m de câble  
 For different cable length see IOM, chapter 1.5  
 Für abweichende Kabellänge siehe EBA, Kapitel 1.5  
 Pour des longueurs supérieures, voir la section 1.5 du manuel  
 For hex.-woodscrew 0,4\*2,8 plug 0,5 DIA  
 Für Skt.-Holzschr. 10\*70 Dübel Ø12mm  
 Pour vis à bois hexagonale 10\*70 trou de 12mm  
 Installation instructions "pedestal" 1 597 2507  
 Installationsanweisung "Fußstück" 1 597 2507  
 Instruction d'installation du "pied d'assise" 1 597 2507

Lifting hoop cross section  
 Fangbügel-Querschnitt  
 Section de l'anse de levage



DN150, DIN EN 1092-2, PN16  
 6" ANSI B16.1 CLASS 125



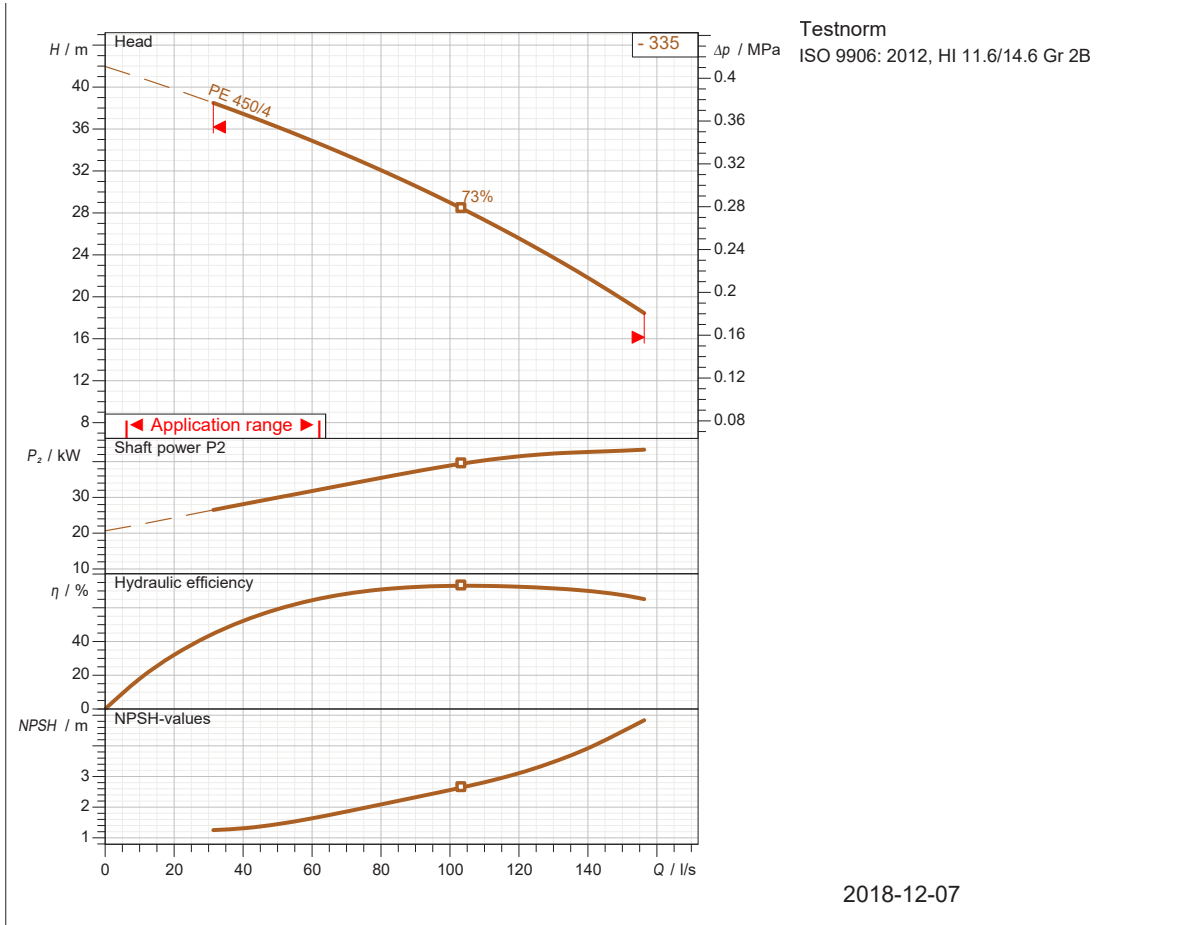
[ mm  
[ inch ]

OK = Ohne Kühlmantel  
 Without cooling jacket  
 Sans enveloppe de refroidissement

MK = Mit Kühlmantel  
 With cooling jacket  
 Avec enveloppe de refroidissement



## SULZER XFP155J SUBMERSIBLE DEWATERING PUMP



<b>Operating data specification</b>		Power input	
Flow		Head	
Efficiency		Rated power	
NPSH		Fluid	Water, pure
Temperature	20 °C	Nature of system	Single head pump
No. of pumps	1		
<b>Pump data</b>		Make	SULZER
Type	XFP 155J-CB2 50 HZ	Impeller	Contrablock Plus impeller
Series	XFP PE4-PE7	Impeller size	335 mm
N° of vanes	2	Suction flange	DN200
Free passage	75 x 100 mm	Type of installation	wet well vertical installation 2"
Discharge flange	DN150		
Moment of inertia	0.59 kg m <sup>2</sup>		
<b>Motor data</b>		Frequency	50 Hz
Rated voltage	400 V	Nominal Speed	1480 1/min
Rated power P2	45 kW	Efficiency	94.2 %
Number of poles	4	Rated current	81 A
Power factor	0.852	Rated torque	290 Nm
Starting current	648 A	Degree of protection	IP 68
Starting torque	784 Nm	No. starts per hour	10
Insulation class	F		

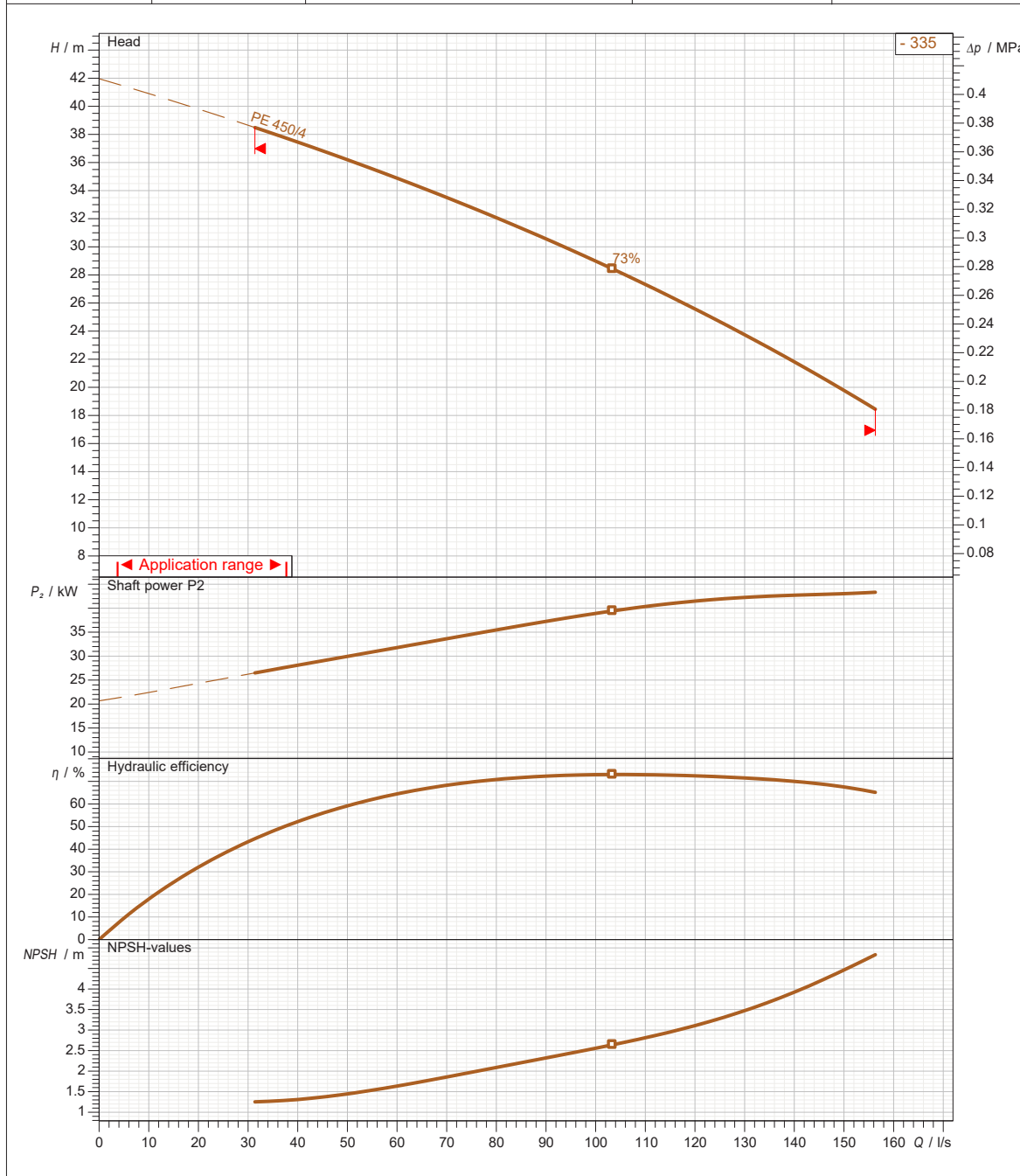
Sulzer reserves the right to change any data and dimensions without prior notice and can not be held responsible for the use of information contained in this software.

Spaix® 4, Version 4.3.9 - 2018/05/22 (Build 407)  
Data version June 2018



## SULZER XFP155J SUBMERSIBLE DEWATERING PUMP

Density 998.3 kg/m <sup>3</sup>	Viscosity 1.005 mm <sup>2</sup> /s	Testnorm ISO 9906: 2012, HI 11.6/14.6 Gr 2B	Rated speed 1483 1/min	Date 2018-12-07
Flow	Head	Rated power	Power input	NPSH



Impeller size 335 mm	N° of vanes 2	Impeller Contrablock Plus impeller	Solid size 75 x 100 mm	Revision
-------------------------	------------------	---------------------------------------	---------------------------	----------

Sulzer reserves the right to change any data and dimensions without prior notice and can not be held responsible for the use of information contained in this software.

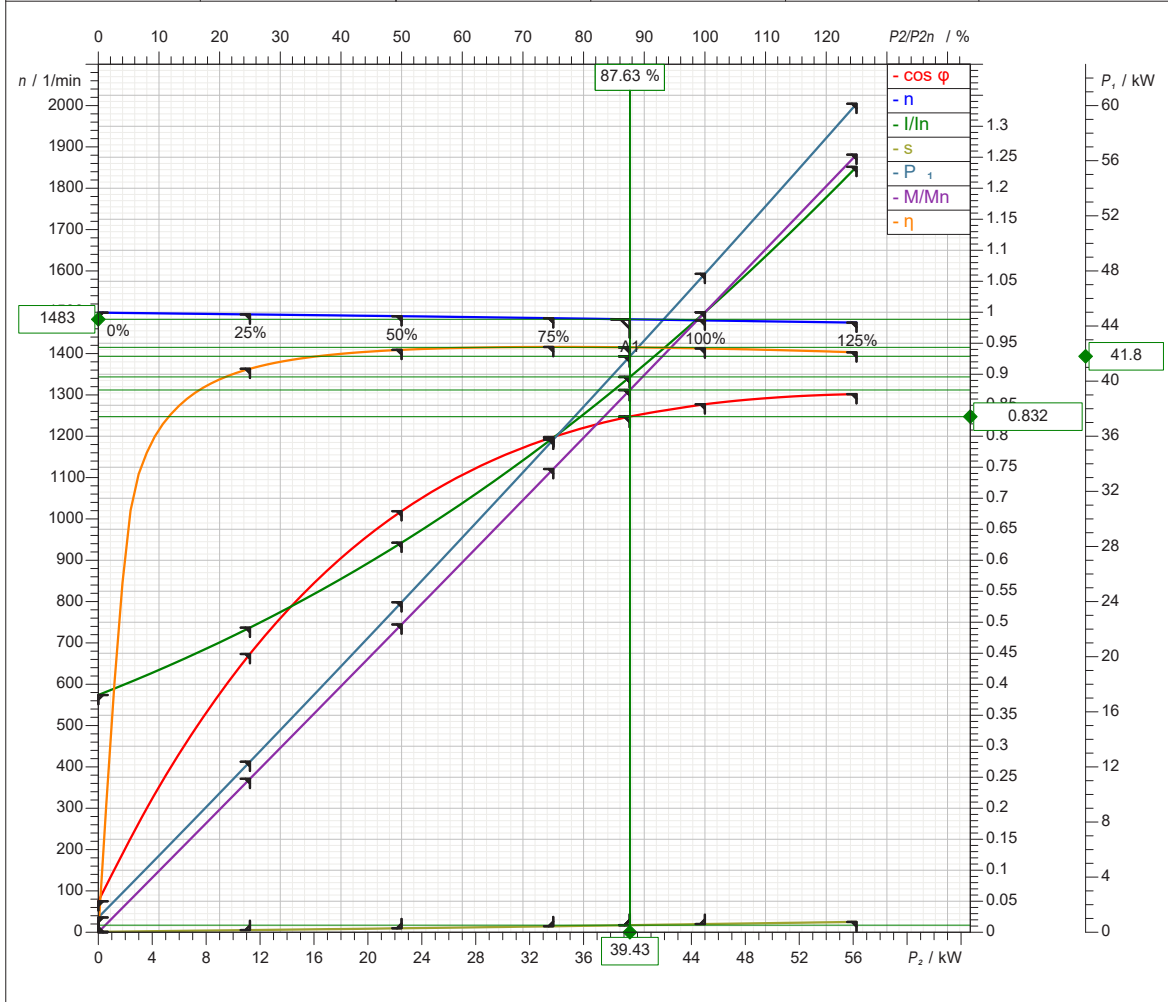
Spaix® 4, Version 4.3.9 - 2018/05/22 (Build 407)  
Data version June 2018





## SULZER XFP155J SUBMERSIBLE DEWATERING PUMP

Rated power 45 kW	Service factor 1	Nominal Speed 1480 1/min	Number of poles 4	Rated voltage 400 V	Date 2018-12-07
----------------------	---------------------	-----------------------------	----------------------	------------------------	--------------------



Symbol	No loac	25 %	50 %	75 %	100 %	125 %
$P_2$ / kW	0	11.25	22.5	33.75	45	56.25
$P_1$ / kW	1.074	12.38	23.95	35.75	47.79	60.14
$\eta$ / %	0	90.89	93.94	94.4	94.16	93.54
$n$ / 1/min	1499	1495	1490	1486	1480	1475
$\cos \varphi$	0.05002	0.4489	0.6792	0.7988	0.8516	0.868
$I$ / A	31	39.8	50.9	64.6	81	100
$s$ / %	0.06376	0.3479	0.6376	0.9624	1.319	1.67
$M$ / Nm	0	71.87	144.2	216.9	290.3	364.2

Tolerance according to VDE 0530 T1 12.84 for rated power

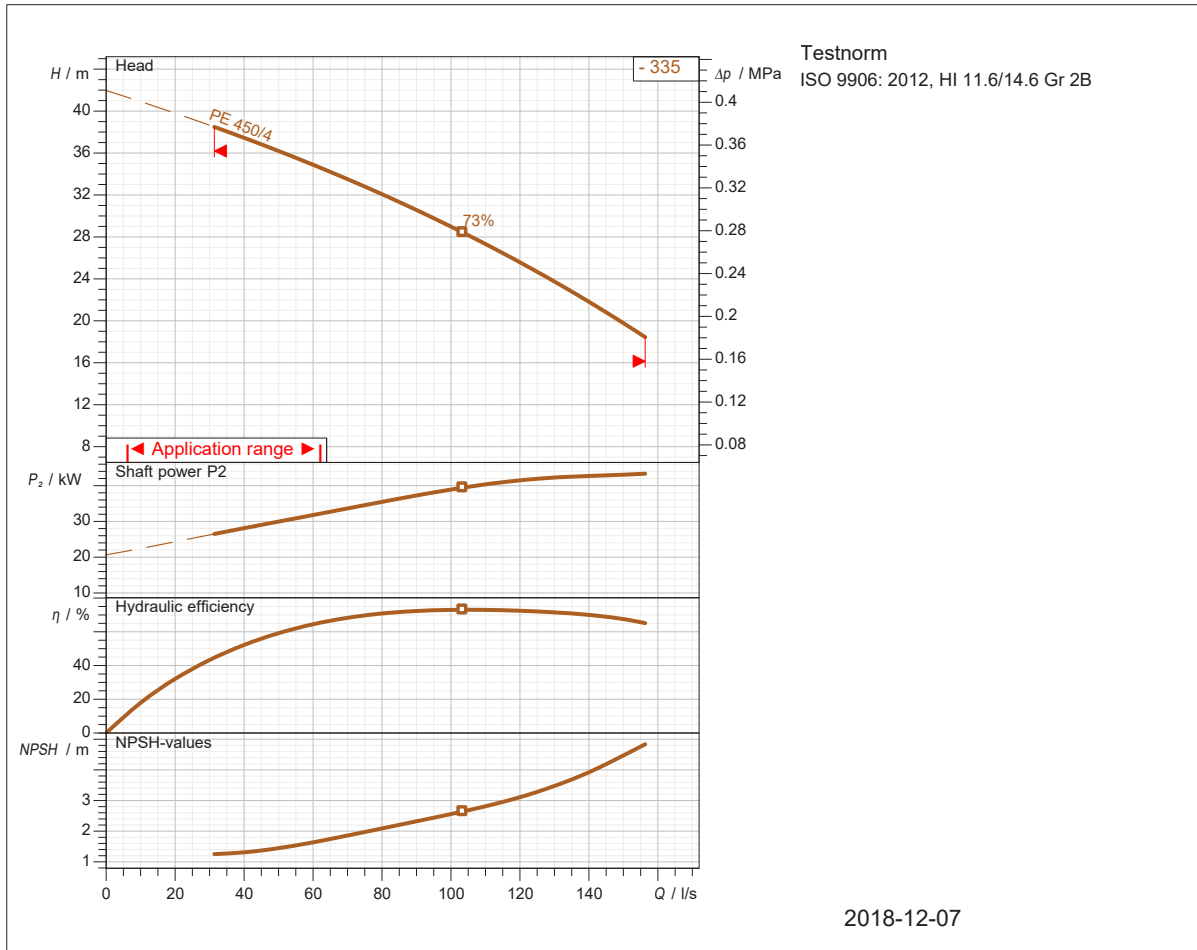
Starting current 648 A	Starting torque 784 Nm	Moment of inertia 0.469 kg m <sup>2</sup>	No. starts per hour 10
---------------------------	---------------------------	--	---------------------------

Sulzer reserves the right to change any data and dimensions without prior notice and can not be held responsible for the use of information contained in this software.

Spaix® 4, Version 4.3.9 - 2018/05/22 (Build 407  
Data version June 2018



## SULZER XFP155J SUBMERSIBLE DEWATERING PUMP



<b>Operating data specification</b>		Power input	
Flow		Head	
Efficiency		Rated power	
NPSH		Fluid	Water, pure
Temperature	20 °C	Nature of system	Single head pump
No. of pumps	1		
<b>Pump data</b>		Make	SULZER
Type	XFP 155J-CB2 50 HZ	Impeller	Contrablock Plus impeller
Series	XFP PE4-PE7	Impeller size	335 mm
N° of vanes	2	Suction flange	DN200
Free passage	75 x 100 mm	Type of installation	wet well vertical installation 2"
Discharge flange	DN150		
Moment of inertia	0.59 kg m <sup>2</sup>		
<b>Motor data</b>		Frequency	50 Hz
Rated voltage	400 V	Nominal Speed	1480 1/min
Rated power P2	45 kW	Efficiency	94.2 %
Number of poles	4	Rated current	81 A
Power factor	0.852	Rated torque	290 Nm
Starting current	648 A	Degree of protection	IP 68
Starting torque	784 Nm	No. starts per hour	10
Insulation class	F		

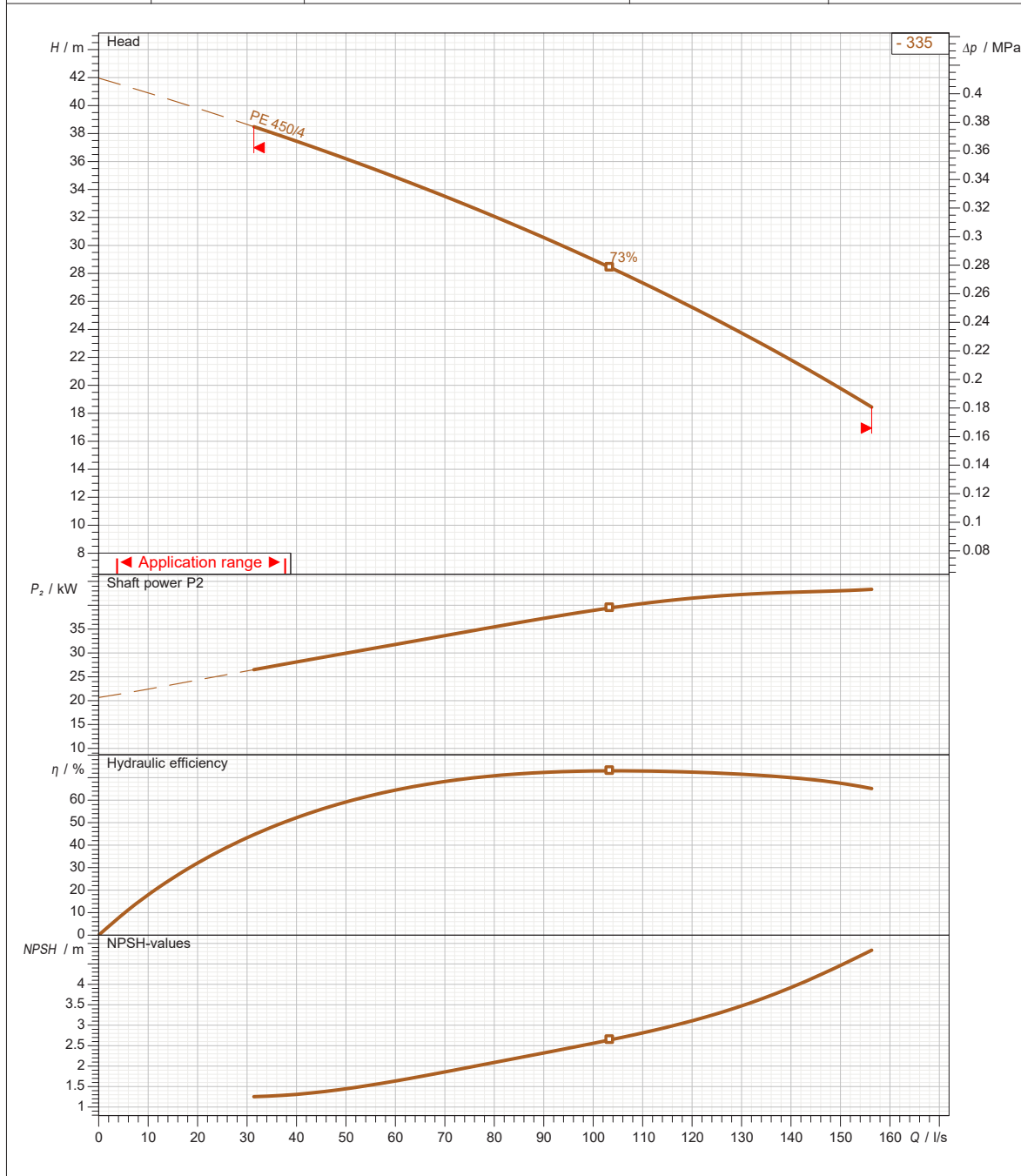
Sulzer reserves the right to change any data and dimensions without prior notice and can not be held responsible for the use of information contained in this software.

Spaix@ 4, Version 4.3.9 - 2018/05/22 (Build 407)  
Data version June 2018



## SULZER XFP155J SUBMERSIBLE DEWATERING PUMP

			Discharge DN150	Frequency 50 Hz
Density 998.3 kg/m <sup>3</sup>	Viscosity 1.005 mm <sup>2</sup> /s	Testnorm ISO 9906: 2012, HI 11.6/14.6 Gr 2B	Rated speed 1483 1/min	Date 2018-12-07
Flow	Head	Rated power	Power input	Hydraulic efficiency
				NPSH



Impeller size 335 mm	N° of vanes 2	Impeller Contrablock Plus impeller	Solid size 75 x 100 mm	Revision
-------------------------	------------------	---------------------------------------	---------------------------	----------

Sulzer reserves the right to change any data and dimensions without prior notice and can not be held responsible for the use of information contained in this software.

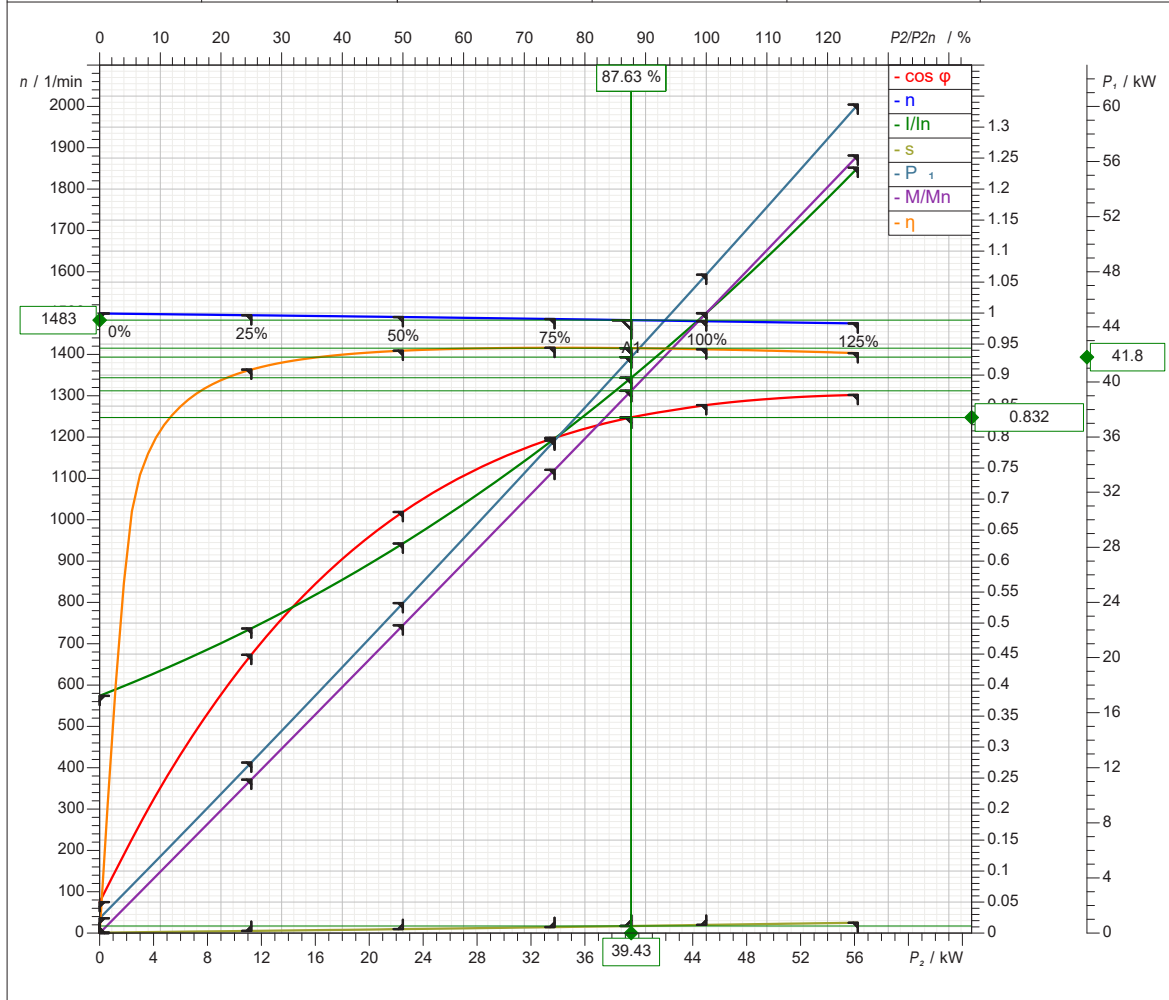
Spaix® 4, Version 4.3.9 - 2018/05/22 (Build 407)  
Data version June 2018





## SULZER XFP155J SUBMERSIBLE DEWATERING PUMP

Rated power 45 kW	Service factor 1	Nominal Speed 1480 1/min	Number of poles 4	Rated voltage 400 V	Date 2018-12-07
----------------------	---------------------	-----------------------------	----------------------	------------------------	--------------------



Symbol	No loac	25 %	50 %	75 %	100 %	125 %
$P_2 / \text{kW}$	0	11.25	22.5	33.75	45	56.25
$P_1 / \text{kW}$	1.074	12.38	23.95	35.75	47.79	60.14
$\eta / \%$	0	90.89	93.94	94.4	94.16	93.54
$n / 1/\text{min}$	1499	1495	1490	1486	1480	1475
$\cos \varphi$	0.05002	0.4489	0.6792	0.7988	0.8516	0.868
$I / \text{A}$	31	39.8	50.9	64.6	81	100
$s / \%$	0.06376	0.3479	0.6376	0.9624	1.319	1.67
$M / \text{Nm}$	0	71.87	144.2	216.9	290.3	364.2

Tolerance according to VDE 0530 T1 12.84 for rated power

Starting current 648 A	Starting torque 784 Nm	Moment of inertia 0.469 kg m <sup>2</sup>	No. starts per hour 10
---------------------------	---------------------------	--	---------------------------

Sulzer reserves the right to change any data and dimensions without prior notice and can not be held responsible for the use of information contained in this software.

Spaix® 4, Version 4.3.9 - 2018/05/22 (Build 407)  
Data version June 2018

