



Typical Pump Configuration

Pioneer Prime

PP108C18L72

Performance

Pioneer Prime series - vacuum assisted, end suction centrifugal pump

Bare shaft, frame mounted, fully automatic dry priming, vacuum assisted, run dry, heavy duty pump

Size	10" x 8" 254 x 200 mm
Flow, Max	5750 USGPM 1320 m ³ /h 360 l/s
Head, Max	500 feet 183 meters
Flow at BEP	5400 USGPM 1240 m ³ /h 340 l/s
Efficiency at BEP	84%
Solids Handling, Max	1.31" 33 mm
Operating Speed, Max	2000 rpm
Suction Connection	10" 150 ANSI Flanges
Delivery Connection	8" 150 ANSI Flanges
Lubrication	Oil STD Grease optional
Fasteners	Imperial

Applications

Quarry	Firefighting
Dust Suppression	Steel
Mining	Oil & Gas

PosiValve™ Patent #6,783,730 PP108C18L72_03.14

High pressure, high flow, heavy duty pump

Designed to operate over a broad range of performance while delivering outstanding suction lift, the PP108C18 is the clear choice. The rugged construction and modular design provide proven reliability and flexibility in the most demanding applications.

UltraPrime™ Priming System

Priming System	Mechanically Driven Diaphragm Style Vacuum Pump
Air Removal Capability	50 CFM Single chamber with positive sealing air separation
Priming Chamber	PosiValve™ with stainless steel float ball & linkage.
Discharge Check Valve	Swing Style - ductile iron with Buna-n Disc

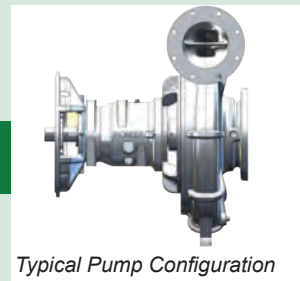
Other Specifications

Mechanical Seal	Single seal w/ tungsten carbide vs. silicon carbide seal faces, Viton® elastomers, 300 series stainless steel hardware and spring, designed for indefinite dry running
Pump End Bearing	Single row ball
Drive End Bearing	Single row ball
Shaft	1144 Stress Proof Steel

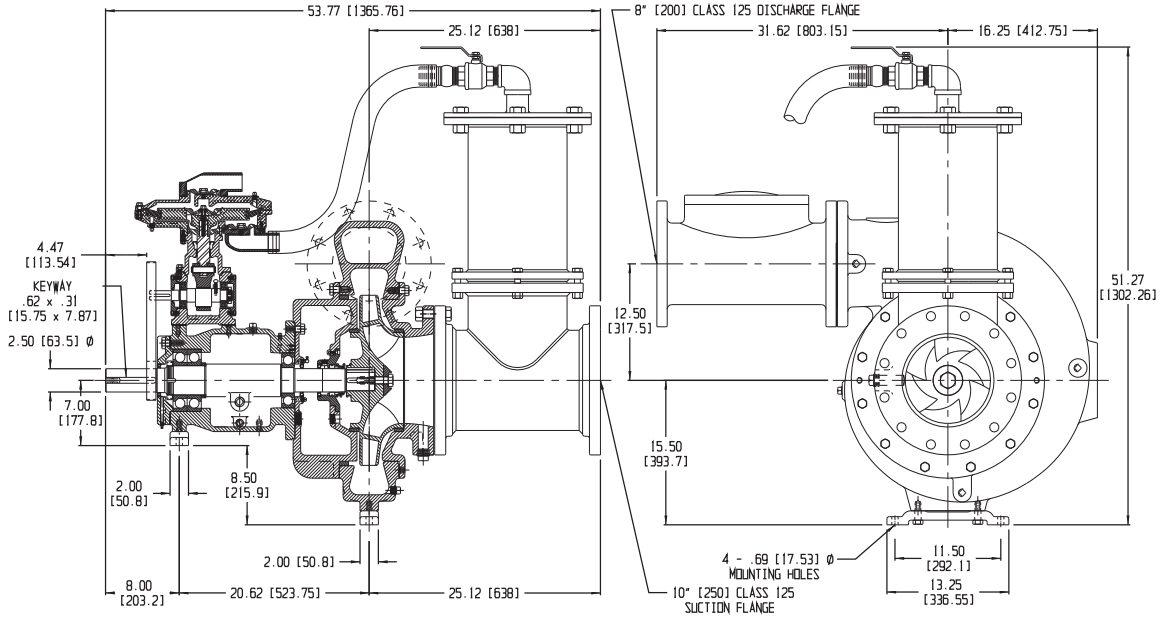
Construction Materials Options

	Standard Construction	Optional Constructions	
Impeller	Ductile Iron	CD4MCu	316 SS
Wear Ring	ASTM A48 Class 40 Gray Iron	316 SS	316 SS
Suction Cover	ASTM A536 65-45-12	CD4MCu	316 SS
Volute	ASTM A536 65-45-12	CD4MCu	316 SS
Brac-plate	ASTM A536 65-45-12	CD4MCu	316 SS
Backplate	ASTM A536 65-45-12	CD4MCu	316 SS

Mechanical Dimensions

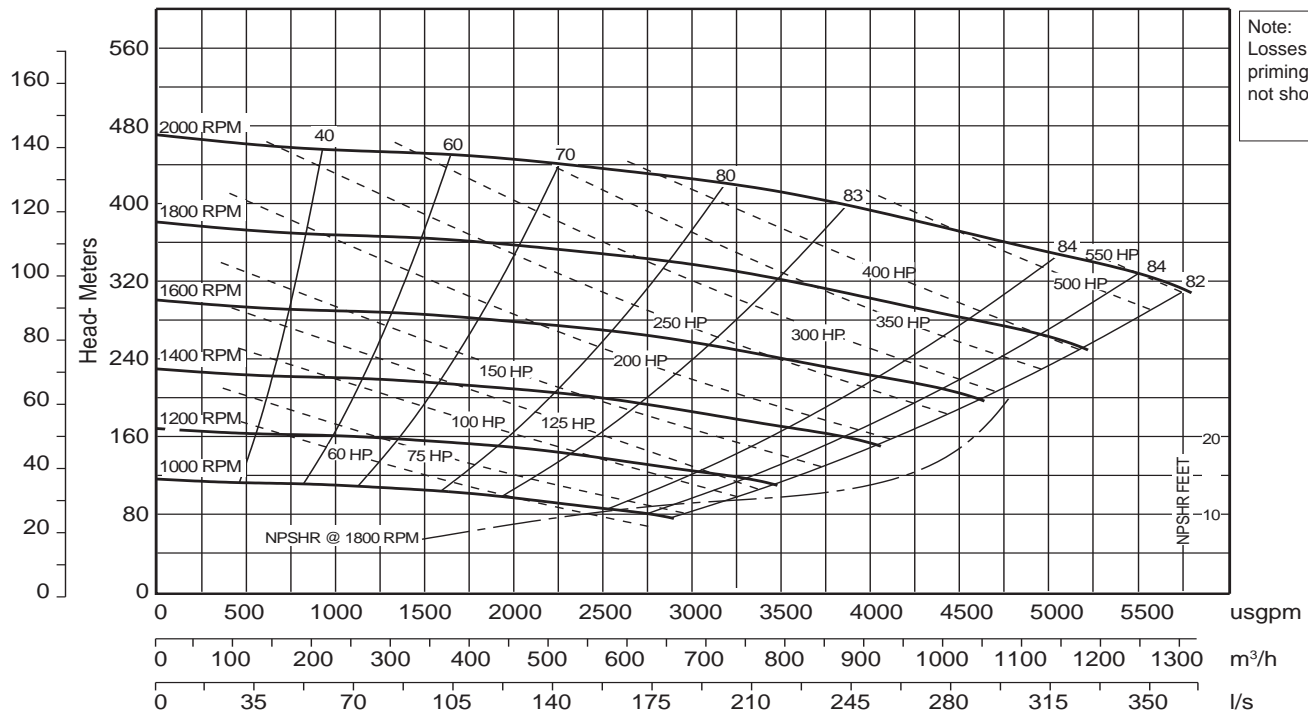


PP108C18



Performance Curve

Model: PP108C18	Impeller Dia: 18.25"	Speed: Variable	Solids Size: 1.31"	Curve #A5135HQ
-----------------	----------------------	-----------------	--------------------	----------------



1800 PUMP RENTAL

nationalpump.com.au | sales@nationalpump.com.au

