



WASTEWATER WARRIOR 70-120-200 HP CORNELL



Cornell cutters address ragging and plugging. The Blade Cutter allows for minimal efficiency loss, with the Waste Warrior tackling aggressive plugging.

The recognizable design incorporating mounting surfaces rather than mounting feet lets you know it's a quality Cornell Pump frame supporting a robust Cornell pump.

KEY FEATURES

- Designed to break up clogs and prevent ragging
- Hardened for long life
- Shaped to minimize flow restrictions
- Saves labor and downtime required to clean out clogs
- Breaks up "flushable" wipes and other materials in municipal applications
- Breaks up clumps of straw in manure applications

ENGINE SPECIFICATIONS

Engine	Cummins QSB6.7
--------	----------------

PUMP SPECIFICATIONS

Pump	Cornell 4NHWB
Max. Flow	290 m ³ /hr 80l/s
Discharge Size	102 mm
Suction Size	127 mm
Solids Handling	76 mm
Max. Speed	2000 rpm
Shut-Off Head	140 m
BEP Head	129 m
BEP Flow	260 m ³ /hr 73l/s
BEP Percent	64%

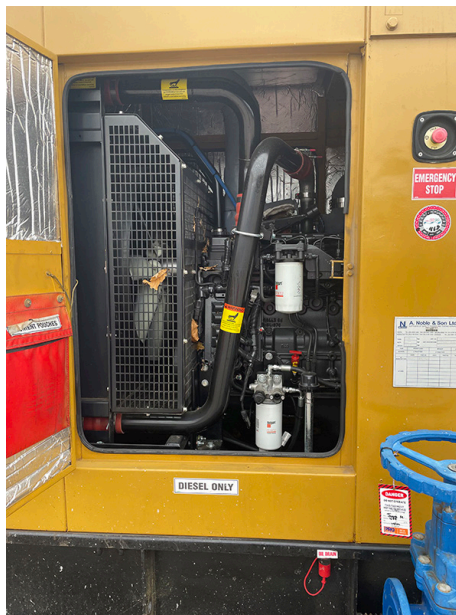
MATERIALS OF CONSTRUCTION

Wear Ring	Cast Iron
Impeller	Cast Iron
Volute	Ductile Iron
Shaft	17-4 Ph Stainless Steel
Shaft Sleeve	416 Stainless Steel
Backplate	Cast iron
Mechanical Seal	Tungsten Carbide vs. Silicon Carbide
Bearing Frame	Cast Iron



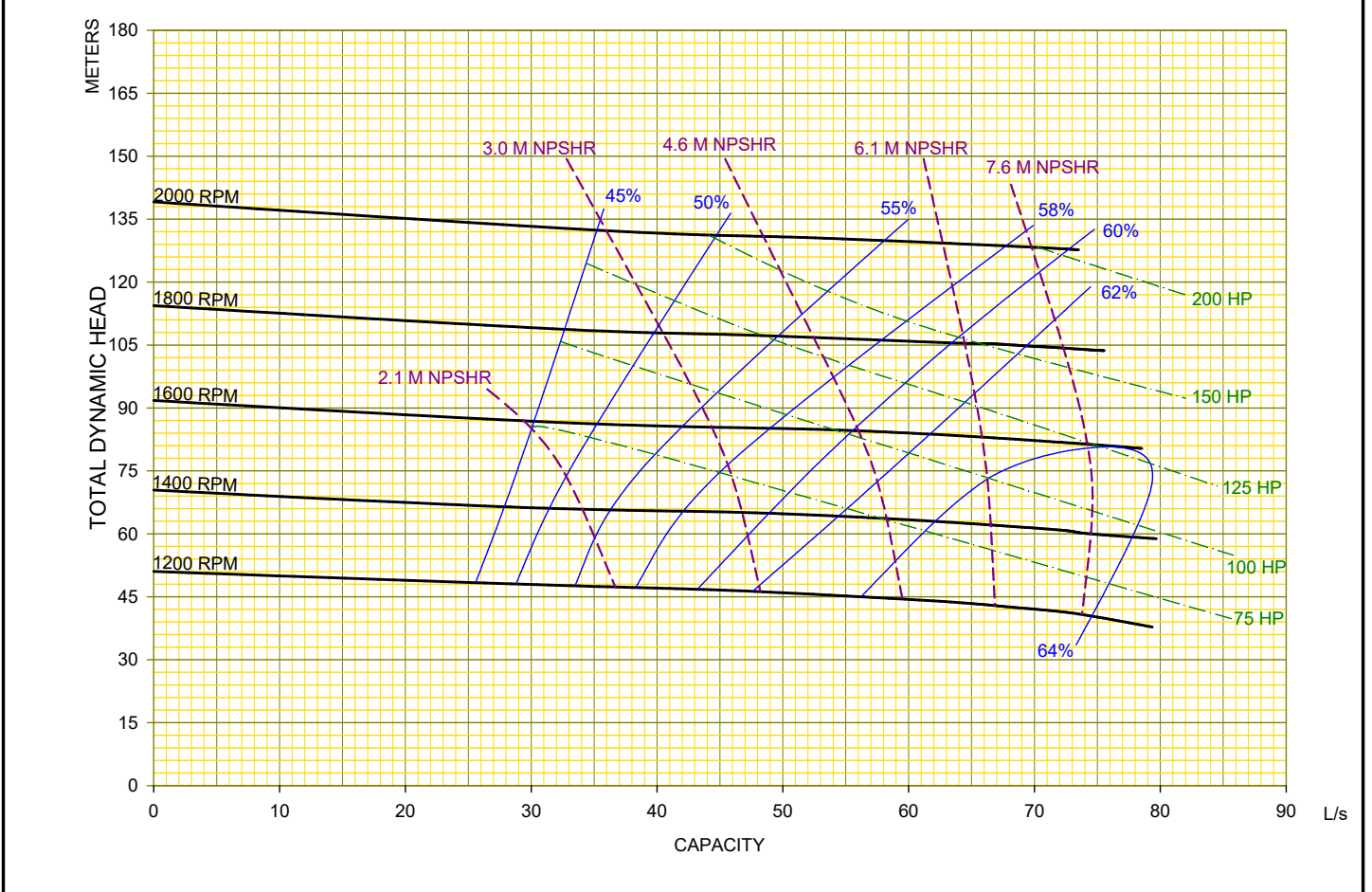
WASTEWATER WARRIOR 70-120-200 HP CORNELL

ADDITIONAL IMAGES



WASTEWATER WARRIOR 70-120-200 HP CORNELL

Performances shown are for S.G. 1.0 60°F water, frame mounted configuration. Other mounting styles or S.G. may require curve adjustments.	Speed	Impeller Dia.	Style	Volute	Solids Dia.	N _s	Suction	Discharge	No. Vanes
	VARIOUS	445 mm	ENCLOSED	SINGLE	76 mm	875	127 mm	102 mm	2



NPE 70-120-200HP-WW (CUTTER)

X	X	X	MODEL : 4NHWB	CURVE NO: 4NHWBV1
00	07/26/21	CI/FM	TYPE :SOLIDS HANDLING	

